

社區溝通及參與

Community Communication and Engagement

2018年第二次的社區座談會於9月5日假西營盤贊育醫院舉行，以簡介重建計劃的最新進展及主要工程的具體構思。除了關注瑪麗醫院重建項目，現場參與人士亦就聯網醫院的交通配套、醫院的科技應用等提出寶貴意見，讓我們更切實了解社會的期望及需要。

The second community forum in 2018 was held on 5 September at Tsan Yuk Hospital, Sai Ying Pun. The participants were briefed about the latest update on QMH Redevelopment Project and concept design of the new block. Valuable views on the project and other issues such as the ancillary transport facilities of the cluster hospitals and use of technology in medical services were received, which are crucial for us to understand the social needs and expectation.



如對工程有任何查詢或意見，請聯絡：

Should you have any enquiries or comments in relation to the Redevelopment Project, please contact:
瑪麗醫院規劃及發展組 Planning & Commissioning Team, Queen Mary Hospital
電郵 Email: qmh_redevelopment@ha.org.hk 電話 Telephone: 2255 3926
瑪麗醫院重建計劃網站 QMH Redevelopment Project Website: <http://www3.ha.org.hk/qmh/redevelopment/>



瑪麗醫院 重建計劃通訊

2018年10月 / Oct 2018

Queen Mary Hospital
Redevelopment
Project Newsletter



臨床病理大樓、病理學樓 (香港大學) 及醫生宿舍的搬遷進度 Relocation Progress of Clinical Pathology Building, Pathology Building (HKU) and Housemen Quarters

為騰空臨床病理大樓、病理學樓 (香港大學) 及醫生宿舍以準備進行拆卸並於原址興建新大樓，我們於今年 8 月初完成了最後階段的搬遷工作，上述三座現有建築物內的設施和服務 (如病理學系及微生物學系的實驗室、教學設施、臨床部門辦公室、醫生候召室等) 已順利遷往由高級職員宿舍改建而成的 T 座，並全面投入運作。

To vacate Clinical Pathology Building, Pathology Building (HKU) and Housemen Quarters for the demolition works and construction of a new block, the final phase of the relocation works was completed in early August 2018. The facilities and services of the aforementioned three existing buildings (e.g. laboratories of Department of Pathology and Department of Microbiology, teaching facilities, offices of clinical departments, call rooms, etc.) have been smoothly relocated to Block T (the converted Senior Staff Quarters) and have commenced full operation.



T 座教學設施及實驗室 Teaching facilities and laboratories at Block T



T 座 2 樓中庭 Atrium, 2/F, Block T



T 座 Block T

新大樓工程的前期準備 Preparation for Construction of New Block

為配合即將於今年第四季開展的新大樓工程，於工程範圍附近 (K 座) 的籌備工作如重置走火通道、樓宇勘察及外牆修葺等工程已於今年 7 月完成。而有關拆卸臨床病理大樓、病理學樓 (香港大學) 及醫生宿舍的前期工程如清拆石棉、移除地底油缸等亦已於今年第三季完成。

To prepare for the commencement of construction of new block in the fourth quarter of 2018, pre-construction works for the building next to the construction site (Block K) such as re-provision of means of escape, condition survey and repair of external walls has been completed in July 2018. Preparation for the demolition of Clinical Pathology Building, Pathology Building (HKU) and Housemen Quarters such as asbestos removal and decommissioning of underground oil tank has also been completed in the third quarter of 2018.

主要工程里程碑 Milestone of the Main Works

瑪麗醫院重建計劃第一期主要工程已於今年 5 月 18 日獲立法會財務委員會批准撥款。主要工程即將於今年第四季正式開展，並預計於 2024 年落成。

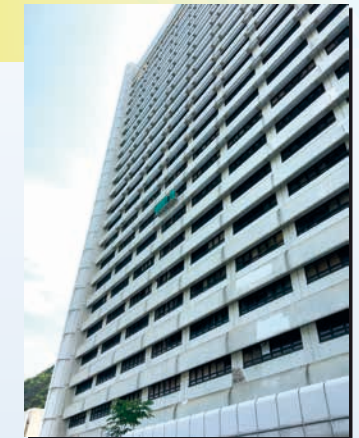
Redevelopment of QMH, phase 1 – main works has sought funding approval by the Finance Committee (FC) of Legislative Council on 18 May 2018. The construction works is scheduled to commence in the fourth quarter of 2018 for completion in 2024.



臨床病理大樓 (左)、病理學樓 (中) 及醫生宿舍 (右) 將於今年第四季進行拆卸，並於原址興建新大樓。
Clinical Pathology Building (Left), Pathology Building (Middle) and Housemen Quarters (Right) are scheduled to be demolished in the fourth quarter of this year for construction of a new block.



地底油缸拆卸工程
Decommissioning of underground oil tank



新大樓工程範圍附近 (K 座) 的樓宇勘察及外牆修葺工程
Condition survey and repair of external walls for the building next to construction site (Block K)